



FEATURES

Input voltage

Nominal: 24 Vdc
Range: 20,4 ÷ 28,8 Vdc

Efficiency

90%

Switching operating frequency

100KHz typ.

Input protections

- Inrush current typ. < 55A @ Vin Nom.
- EMI filter
- Input voltage polarity inversion

See table for

- Output voltage and current
- Output ripple and noise

Output protections

- Short circuit protection with automatic restart

- Overcurrent protection: 1,1±1,5 In
- Overvoltage protection: 1,25±1,40 Vn

Start up time

<0.5 sec.

Output power

600W

Operating indicators

- Led Vout OK

Operating temperature

-10°C to 70°C

Temperature power derating

2%/°C (50÷70°C)

Storage temperature

-40°C to 85°C

Temperature drift

0.01%/°C typ.

Long term stability

Better than 1% after 24hours typ.

Cooling

Natural convention

Dielectric withstand voltage

- Conform to EN 60950

Isolation

- Output - P.E.: 500Vdc

Comply with

- EN 60950-1
- EN 61000-6-2

- EN 61000-6-4

- EN 61000-4-3

- EN 61000-4-4

- EN 61000-4-5

- EN 61000-4-6

- EN 61000-4-8

- CE

Weight

4.75Kg

MTBF

90000 hours at 30°C
MIL-HDBK-217 Notice F G.F.

Optional features

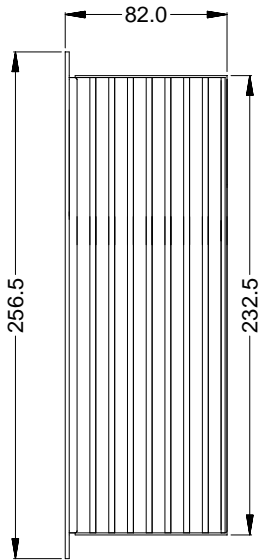
- DD - Output decoupl. diode for parallel connection
- AL - Alarm relay contact

FEATURES TABLE

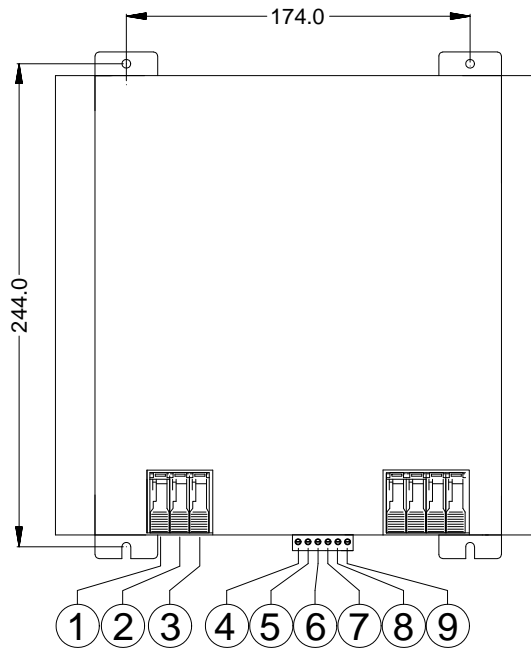
Vout Nom V	Iout Nom. A	Iout Min A	Voltage Accuracy %	Line Reg. %	Load Reg. %	Ripple & Noise (0÷20MHz) mV
48	12.5	0	±0.5	±0.5%	± 1%	<200

DIMENSIONS AND CONNECTIONS

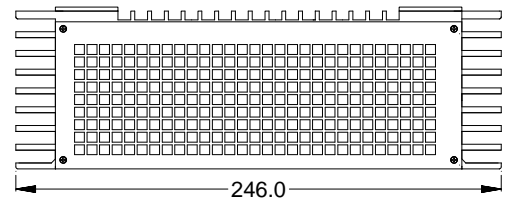
side view



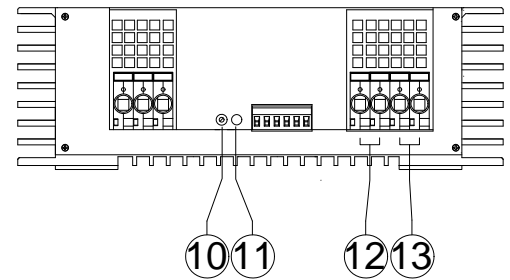
front view



top view



bottom view



- 1)P.E. 2)-VIN 3)+VIN 4)Bus Sharing 5)GND 6)Spare 7)Spare
8)Relay COM 9)Relay Alarm 10)VADJ (trimmer opt.) 11)Led VoutOK 12)-Vout 13)+Vout